



Edgware & Hendon
Reform Synagogue
ק"ק לדור ודור

EHRS GETS THE POINT!

**An information evening for parents on collecting CRP
points for Primary Jewish school applications 26/27**

Why do we

collect

The CRP is a method of establishing whether the child/family practices the three pillars of the Jewish faith. Prayer, education and acts of kindness.

Collecting CRP points allows you to prove that you are eligible for a faith place at the schools you are applying to that require a completed CRP form.

Jewish schools set the admissions policy and confirm which applicants have satisfied the Jewish practice criteria. Those wishing to be considered as priority applicants for available places need to obtain a certificate establishing religious practice (CRP), based on the child's synagogue attendance, Jewish education and/or family communal activity.



[Useful website: School Admissions - Partnerships for Jewish Schools \(pajes.org.uk\)](http://pajes.org.uk)

How does it work?

Jewish day schools all require the completion of a CRP (Certificate of Religious Practice) form for admission which is dependent on collecting points for service attendance, Jewish education or volunteering in the Jewish community. Each school has its own unique requirements.

Registering - We ask you to register by emailing us at education@ehrs.uk that you are collecting points through EHRS and we will support you by assigning you a Shabbat Passport.

Attendance - We are very happy to help you collect CRP points to confirm you have attended services at EHRS. We will ask you to collect stickers for services attended in your child's individual Shabbat Passport. The Passport will be assigned to you at your first attendance, then kept at the Shul for safe keeping!

Signing off - The final stage is to get back in touch with us and we will arrange for you to meet with a member of our clergy team who will use this Shabbat Passport to confirm your attendances required by the schools and will be delighted to speak with you and sign your form.

Where do I collect?

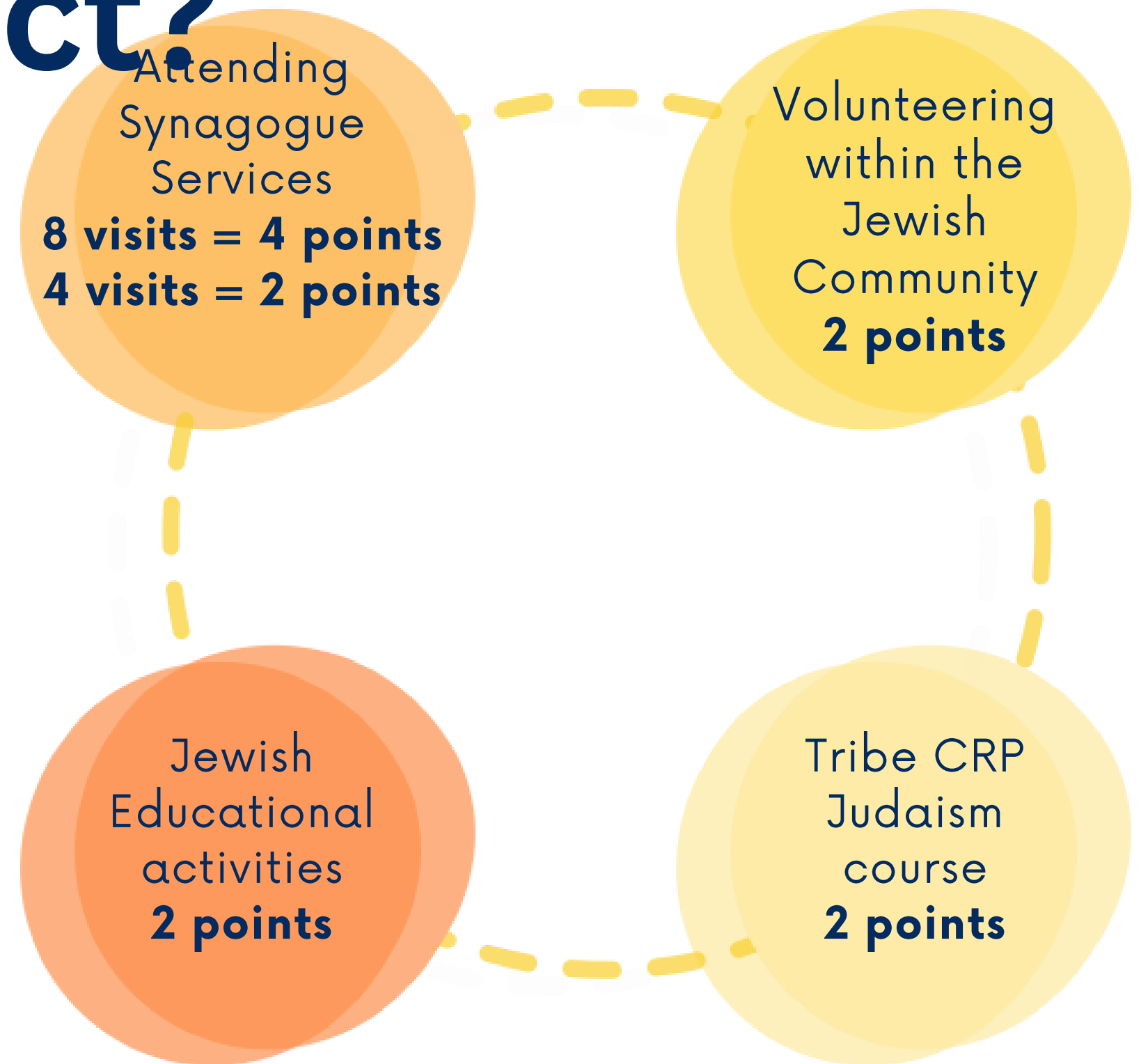
Please note some schools ask for 4 points, and some ask for 6 points. Some reform synagogues ask for more.

It is important that you check the CRP requirements, including the number of points needed for each school to which you are applying. Please refer to the school's websites for their CRP forms.

Not all schools have the same CRP form.

Points can be collected from any of the following categories. All choices are optional.

There is no benefit from earning more than the required amount of points.



When can I collect?



Please note that Admissions and CRP requirements differ from school to school.

It is very important to check each school's website for their admissions policy to understand what is required.

The Schools

Criteria

All Nursery places

Apply directly to the school

(No points are needed for Nagila Nursery and attending will earn you points for Reception).

Reception Places

CRP forms go direct to the school, but you will also be required to complete a borough specific school application. These are due by 15 January 2026.

You need to complete THREE forms

1. Common Application Form (CAF) from your local authority website between 1 September and 31 October
2. Supplementary Information Form (SIF) available on school website
3. Certificate of Religious Practice (CRP) available on school website

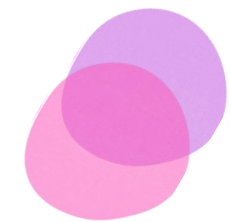


GOOD TO KNOW!

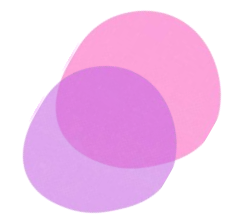
None of the schools you apply to will know the order in which you rank them. They play no part in the selection process, that is the Local Authority only.

Don't forget to make copies of all the forms you submit, keep a look out for confirmation emails and keep your log in reference safe!

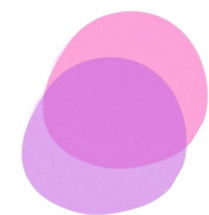
OPPORTUNITIES TO COLLECT WITH EHRS



Shabbat Stay & Play - preschoolers, Friday mornings 10.30am (educational activity for United schools)



Friday night OR Saturday morning service (6.30pm on a Friday and 10.30am on a Shabbat morning) in person



Parallel services that takes place at the synagogue on Shabbat:

Torah Time!, children's service

1st Shabbat of the month -

Shabbat Shirah, musical family service

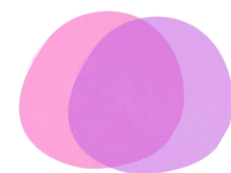
2nd Shabbat of the month

Build a Bible, children's service

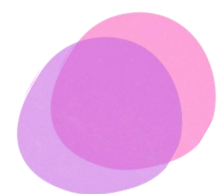
3rd Shabbat of the month -

Shabbat Club, children's service

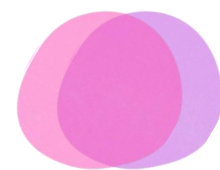
4th Shabbat of the month -



Parent volunteering (CST, Uniform groups, Community Care)



Kuddle Up Shabbat (once a month on a Friday afternoon from 3.45pm)



Your child's attendance at **Orot** (EHRS Cheder)

EHRS WIDER SUPPORT FOR JEWISH EDUCATION

-  Offering Reform environment and learning, creative and non-judgemental
-  Reform community, from generation to generation
-  Young Families activities and events for all ages
-  Supporting challenges with Jewish school SRE etc.
-  Youth clubs, holiday schemes and uniform groups
-  Live your Jewish values with us at EHRS throughout the year
-  Membership offer for all new young families wishing to join EHRS





Q&A

What are the four CRP sections?

1. Shul attendance on Friday night or Shabbat morning
 2. Jewish educational activities
 3. Voluntary Jewish communal, charitable or welfare activities
 4. Completing the Tribe CRP Judaism course, a specially prepared course that is approved by the Office of the Chief Rabbi.
- (Each section of the form has its own specified criteria that must be fulfilled and period of time in which it must be completed)

Where can I get the CRP forms from?

They will be available from each school's office and/or website and the school's local authority

Who needs to have participated in or attended at a particular activity to complete the sections of the form, parent/guardian or child?

For options 1-3 (Shul attendance, Education, Volunteering) at secondary level, only the child's participation is to be recorded, whereas at nursery and primary, it is the child and/or their parent/guardian.

I am not sure about volunteering. What are the options?

You could consider volunteering for a Jewish communal organisation or charity, and many of these organisations are always open to accepting more volunteers. You can also volunteer for your local synagogue, by being on a rota, taking part in their care activities, or through US Chesed. You cannot, however, volunteer for any school you are applying to, for the United Synagogue Head Office or the Office of the Chief Rabbi. For more ideas and suggestions please look at the Jewish Volunteer Network website and the US Chesed pages on the US website.

Examples of options: <https://www.theus.org.uk/category/us-chesed>

What if my child already has a sibling in the school?

Each child must earn their own CRP points for applications to schools.



Q&A

What counts as Jewish Education for the section 'Participating in Jewish Educational activities'?

Attendance at Shiurim, Jewish nurseries, Jewish primary schools and Jewish adult educational courses are all examples of accepted educational activities.


Examples of options: <https://www.theus.org.uk>

What is the Tribe CRP Judaism Course?

The course is now run at Borehamwood Shul by Tribe facilitators and the community leaders. The course is open to all applicants from any community. It consists of six sessions of 45 minutes, covering topics relevant to Jewish customs and practices, festivals, kashrut, etc. All six sessions need to be completed in order to satisfy this section of the CRP form. For primary applications, the parent/guardian must attend the course, and for secondary, the parent/guardian and child should attend. This is a 6 week course that takes place between June and July 2025.

When can I collect points from attending shul?

You can collect points from attending shul on a Friday night OR Shabbat morning. Please check with the shul you wish to attend for which services attendance can be recorded. Not all shuls will be offering to collect points at both services. You can only record attendance for 1 service per week, so you cannot record attendance for Friday night AND Shabbat morning on the same week



EHRIS Young Families is our Facebook page specially dedicated to all who are starting their Jewish adventure with an under 8 in the family. It lists our events as they are planned.

Web page - <https://www.ehrs.uk/youngfamilies/>

E-mail youngfamilies@ehrs.uk to receive weekly updates of all that's going on.